



SPECIALIST MOBILITY VEHICLE SMV N1200

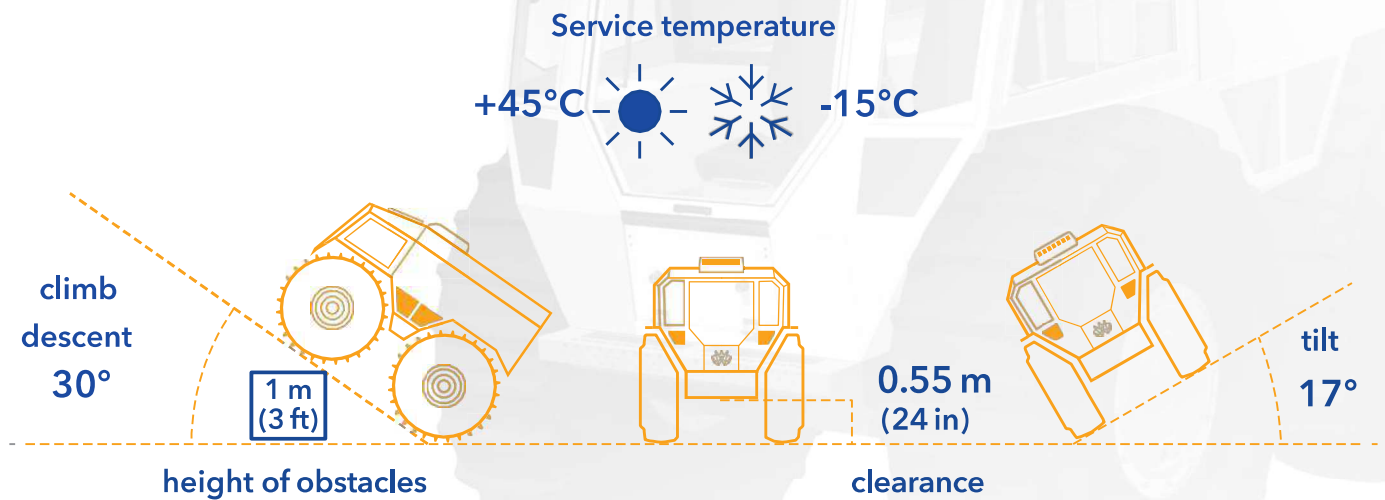


Universal Transportation Solution

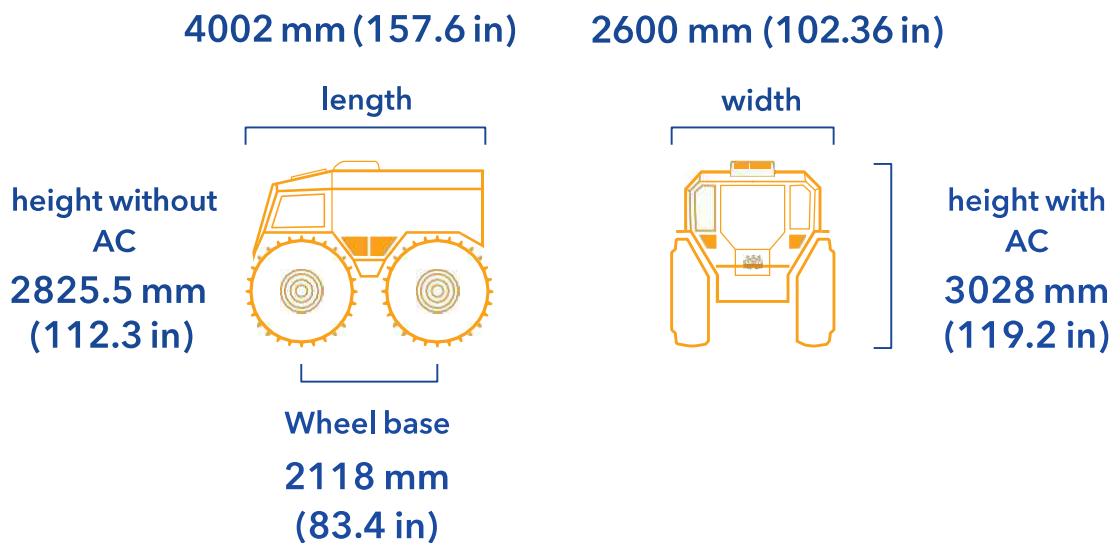
SMV N1200 is a All Terrain with high mobility. Amphibious Vehicle, designed to operate under extremely difficult conditions in any type of terrain. Can overcome multi-level obstacles and also float on water.



SMV N1200



Overall dimensions



Max. Speed

40 km/h



grounds

dense forest, fallen trees, shaky ground, gravel, sand, peatbog, moor, marsh, dunes, rocks, swamps, boulders, scree, snow, ice



water

5 km/h

ponds, lakes, rivers, sandbank, shelves, shores, coasts, climbing from water

Fuel autonomy



DIESEL

95-327 L from 5 lph

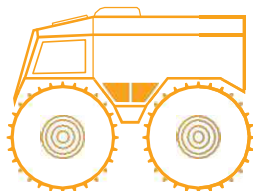
Fuel tank volume of **95 L** plus 4 wheel fuel canisters **58 L** of each canister gives you possibility to drive more than **65 hours** of autonomy and **19 hr non-stop running** just with main fuel tank

SMV N1200

SMV Hard Top

1200 kg

9 



2400 kg

The driver
+ up to
8 passengers



BASE MODEL INCLUDES

- Front cabin and rear compartment ROPS
- Backup battery
- Rear view camera
- LED hi-beam and low beam
- Towing hitch integrated in front and rear bumpers
- Integrated front and rear door ladder
- Parking brake
- 3-point seatbelts for drive and passenger
- Glove boxes and cup holders
- Under floor storage boxes
- Additional fuel tank in the rim
- Autonomous heater
- Preparation for A/C
- Preparation for Winch set

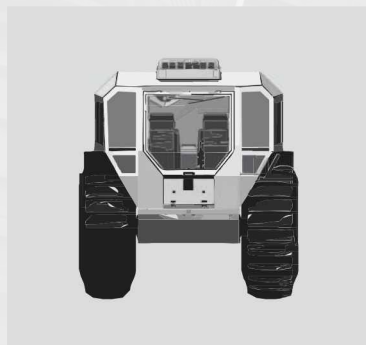
ADDITIONAL OPTIONS

- A/C
- Rear seats (2 or 4) with seatbelts
- Winch set
- Front LED roof light bar
- Locker (2)
- Set of cargo storage nets
- Side windows (2 or 4)

SMV N1200

Specification and technical characteristics

Body type	Hardtop
Body material	Frame and bottom-steel(galvanized), Cabin- Aluminium
Steering	Skid steering
Tire size	1800x600x25(72x23x25in)
Types of tyres	Tubeless, extra low pressure
Suspension	Pneumatic circulating-patented
Maximum speed (at the top gear)	40km/h, water- upto 5km/h
Minimum speed (at the low-gear)	2 km/h
Engine model	Doosan D18
Fuel type	Diesel
Emission control	Tier 4 final
Engine DOC (Diesel Oxidation Catalyst)	Maintenance free
Fuel Consumption	5-8 lph
Engine displacement	1.8 L (61 cubic inches)
Cylinder count	3
Max engine power	55 hp / 41 kwh
Max engine torque	190 Nm
Generator Performance	140 A
Fuel tank volume	95 L
Capacity of additional fuel canisters	4x58 L
Gearbox	6 gear, mechanical
Towing capacity	2350 kg
Cabin internal volume	2 cu m
Rear space internal volume (Hard Top)	5.8 cu m
Overall internal volume (Hard Top)	7.8 cu m
Maintenance interval	250 Motor hours
Parking brake system	Mechanical hand brake



JSW Gecko Motors Private Limited
83, Industrial Area, Phase 1, Chandigarh, Punjab, India 160002
Email : jsw.geckomotors@jsw.in